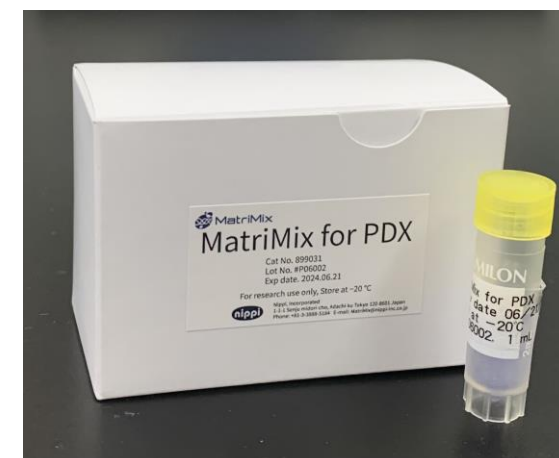


~For mouse transplantation~ MatriMix for PDX

Substrate for transplantation usable for making PDX model (PDX; Patient derived xenograft)

◆ Features of MatriMix for PDX

- ✓ Defined components
(Laminin511E8, Type I Collagen, Hyaluronic acid)
- ✓ Easy to use
- ✓ Little lot-to-lot variation

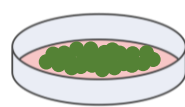


Procedure for making PDX model mice

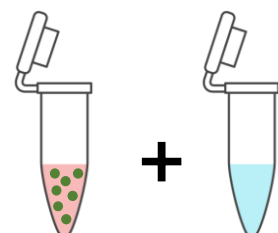
Sampling of tumor tissue



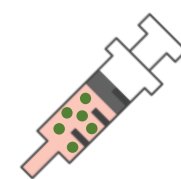
Culture of patient-derived cells or spheroids



MatriMix for PDX cell mixture



Fill syringe



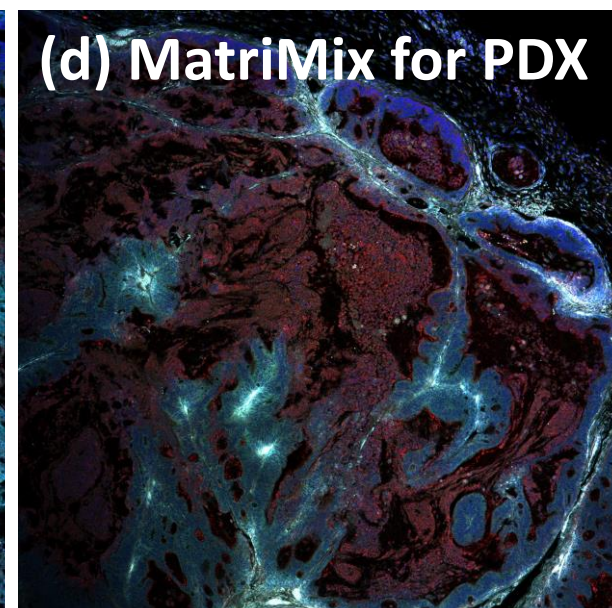
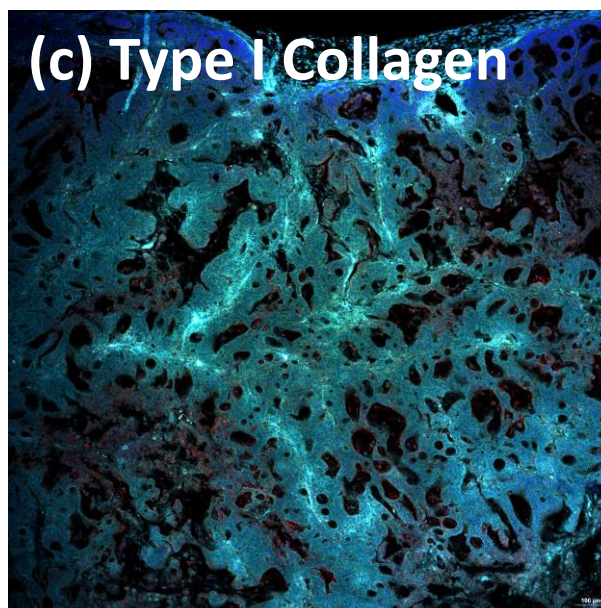
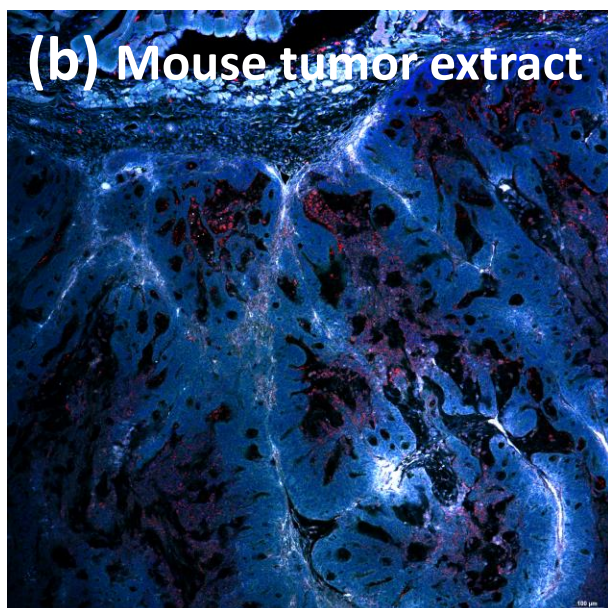
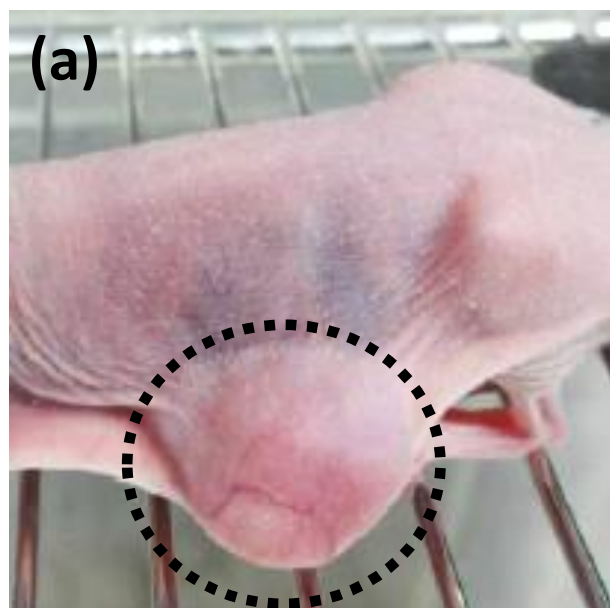
Mouse transplantation & monitor



Tumor formation (2~4 week)

- ★No preparation for use
- ★No centrifugation required
- ★Can mix any culture medium

◆ Tumor formation and immunofluorescence staining



(a) Tumors formed by subcutaneously transplanting spheroids of colon cancer patient-derived cells suspended in MatriMix for PDX into immunocompromised mice. 4 weeks after transplantation.

(b)-(d) Immunofluorescence staining of tumor sections formed using each substrate. For MatriMix for PDX, the tumor tissue contains moderate stroma (collagen) and many cells expressing the colon cancer marker CEA (Carcinoembryonic Antigen). red; CEA, green; Type I Collagen, blue; DAPI

Cat. No.

899031

Product name

MatriMix for PDX

Amount

1 mL × 5 pcs.

※The product is for research only. ※As a 2x solution, a total of 10 mL is available for use as the substrate for transplantation.



Nippi, Incorporated, Biological and Chemical Products Division
〒120-8601 1-1-1 Senju midori-cho Adachi, Tokyo 1208601, Japan

TEL : +81-3-3888-5184 Mail : MatriMix@nippi-inc.co.jp <https://www.matrimix.nippi.bio/>

